

ITS 100 POSITION MONITORING SWITCH

Electrical wiring

Electrical wiring must be done in accordance with the specification of international standard or local specific regulation.

ITS100 provides two 1/2" PT conduit for the wiring and by using proper Coupling, secure the tight sealing.

Wiring of mechanical switch

After loosening 4 screws, open upper cover.

Standard ITS100 has 8 terminal strips.

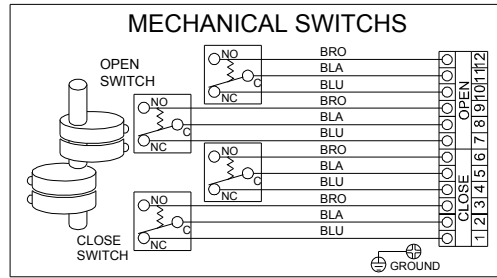
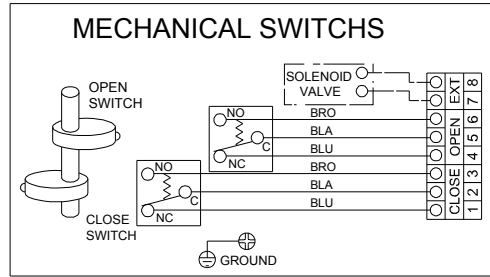
Strip no 1~6 are for wiring of mechanical switch contacts for position detecting and, 7, 8 are for power for solenoid valve when required.

Recommended thickness of wire is up to 15mm for signal,

By loosening screw in terminal by screw driver, and insert the wire inside of terminal strip and tighten the screw again.

Please refer to right hand-side wiring.

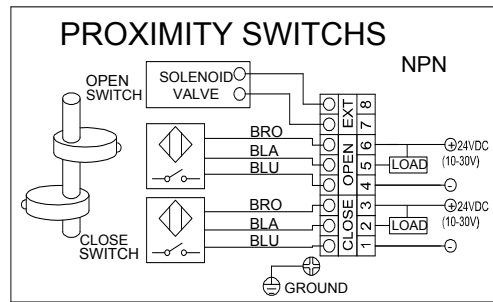
Caution: Make sure to use electricity within the rating of mechanical switch.



Wiring for proximity sensors

Wiring is just the same as that of mechanical switches, but since the operating type can be different depending on the sensor type, so must follow the provided wiring method.

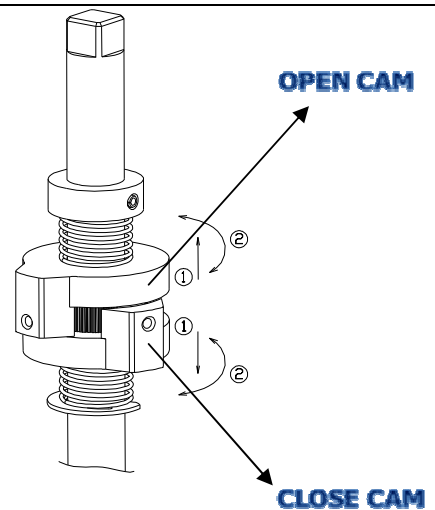
(Right hand-side wiring is the sample of 3 wire type Proximity sensors)



Setting cams and switches

Setting the switch and cam can be simply done by using a resistance multi-meter, buzzer, or lamp. Take off the upper cover from the lower body and put the valve or actuator on the correct position, and adjust the cam by finger, checking the resistance or lamp.

Locate the cam on the position which resistance is detected or the lamp is on. If you set another switch, repeat the above procedure. Before wiring, must cut off all power coming to the switch box.

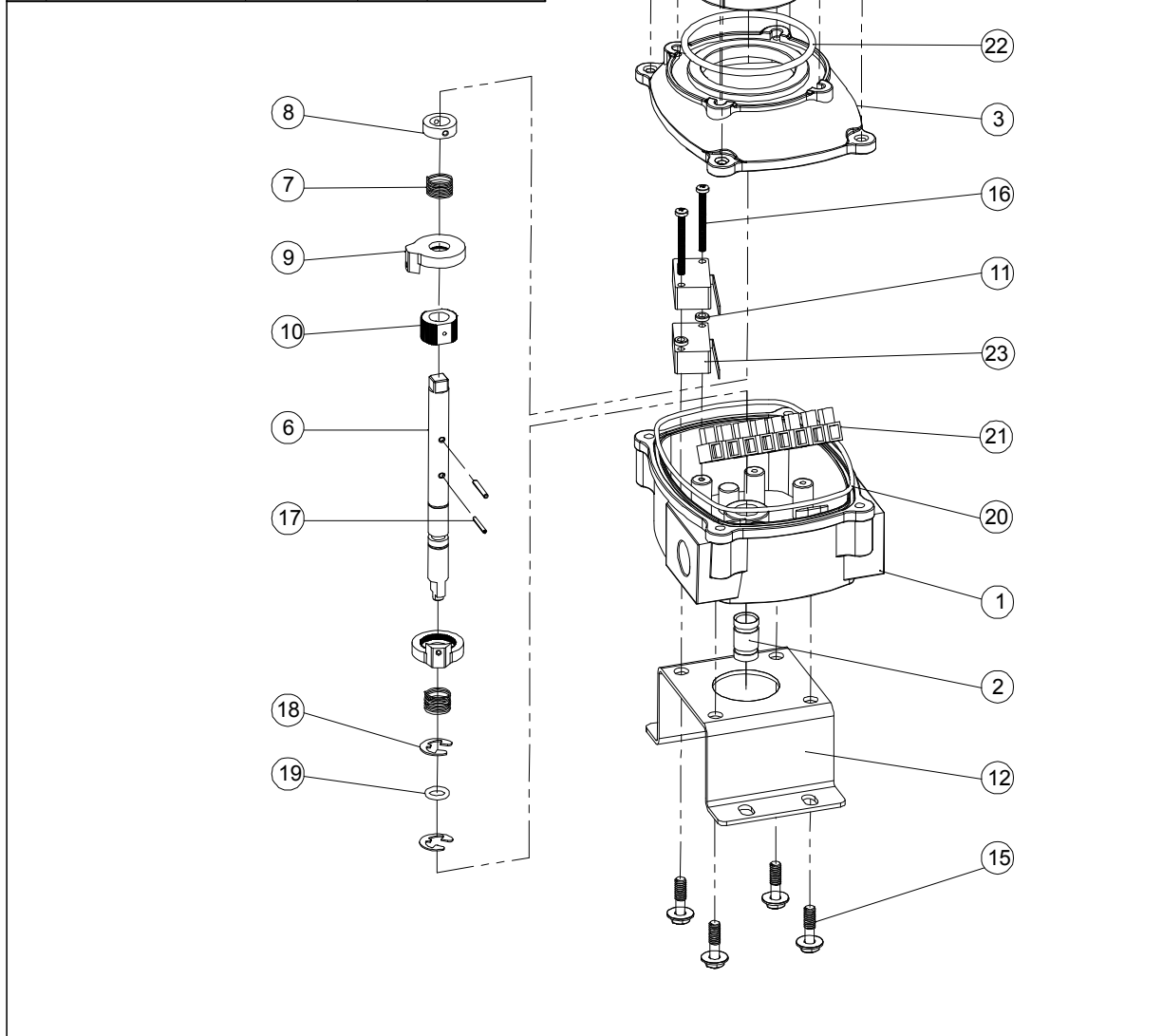


Position monitoring switch ITS100 series

ITS 100 POSITION MONITORING SWITCH

ITS 100 PART LIST

| | | | | |
|-----|--------------------|-----------|-----|------------------------|
| 23 | LIMITS SWITCH | | 2 | SZM-V16 -2FA-61 |
| 22 | O-RING | | 1 | G55 |
| 21 | TURMINAL BLOCK | | 1 | LMTS102-2 05A12H6mm |
| 20 | O-RING | | 1 | S95 |
| 19 | O-RING | | 1 | P06 |
| 18 | E-RING | | 2 | #8 |
| 17 | SPRING PIN | | 2 | ?x14 |
| 16 | BOLT | | 2 | M3x30 |
| 15 | BOLT | | 4 | M6x8 |
| 14 | BOLT | | 4 | M4x5 |
| 13 | CAPTIVE COVER BOLT | | 4 | M5x20 |
| 12 | BRACKET | SUS304 | 1 | |
| 11 | SUPPORT | ABS | 1 | |
| 10 | CAM INNER | P.C. | 1 | |
| 9 | CAM OUTER | P.C. | 2 | |
| 8 | SPACE | ABS | 1 | |
| 7 | SPRING | SWP-A | 2 | |
| 6 | SHAFT | SUS304 | 1 | |
| 5 | COVER INDICATOR | P.C. | 1 | |
| 4 | INDICATOR | ABS | 1 | |
| 3 | COVER | AL20 | 1 | |
| 2 | BUSH | BC20 | 1 | |
| 1 | BODY | AL20 | 1 | |
| NO. | NAME OF PARTS | MATERIALS | QTY | REMARKS |



Position monitoring switch ITS100 series