

APL-422N Limit Switch Box



Ordering Code:

APL

2

1

0

N

2. Weather Proof

3. Weather Proof

4. Exd II BT6

5. Exd II CT6

1. Mechanical Switches

2. Proximity Switches

Mechanical Switches

0: 2-SPDT

1: 3-SPDT

2: 4-SPDT

4: 2-DPDT

6: 2 SPDT + Output 4-20mA

Proximity Switches

0: P&F NJ2-V3-N

1: PS17-5DNU

2: NJ4-12GM-N

3: NBB2-V3

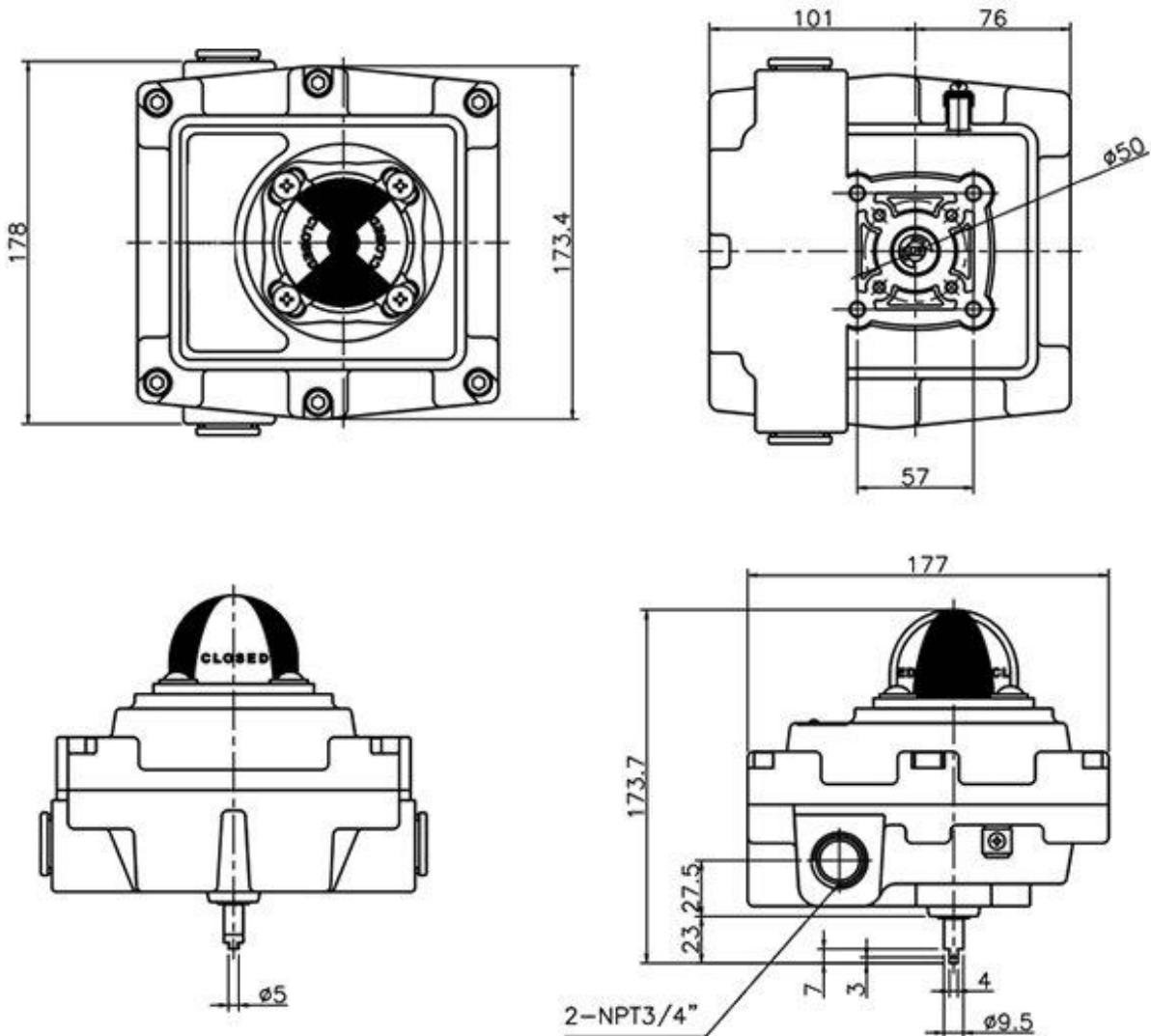
N: Position Indicator

S: Stainless steel

Specifications:

Shell material	Die-casting aluminum	Position indication	Close- Red; Open-Yellow
Shell coating	Polyester paint, black	Cam type	Round cam, red and yellow
Micro Switch type	Inductive proximity switch	Micro Switch Contacts	Two lines NC
Terminal block	8 position, Copper core	Micro Switch Brand	P+F NJ4-12GM-N
Voltage Range	8.2VDC	Rated Current	3mA
Protection Class	IP66	Ambient temperature	-20°C -+60°C
Explosion-proof grade	ExdIIBT6/ ExtDA21	Certificate Number	SYEx18.07114X
Interface thread	2XNPT3/4"	Bracket Type	Movable mounting bracket
Optional accessories	N/A	Bracket Material	Carbon steel paint

Dimensions:



Wiring diagram:

Two lines Proximity Switch NC& NO

Close position wiring

Open position wiring

No 7 & No 8 are reserved

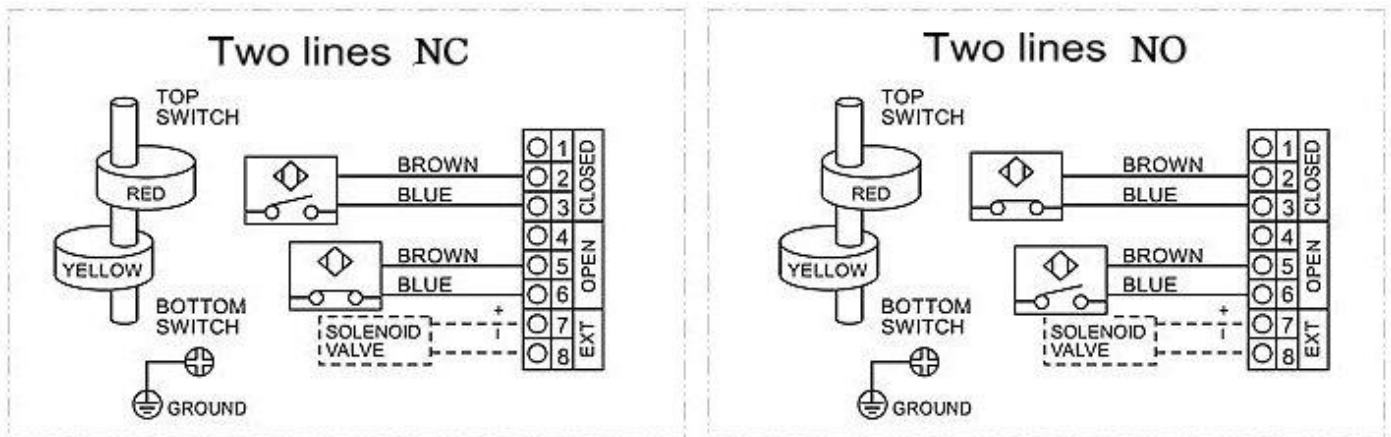
No 2: Brown BN (+)

No 5: Brown BN (+)

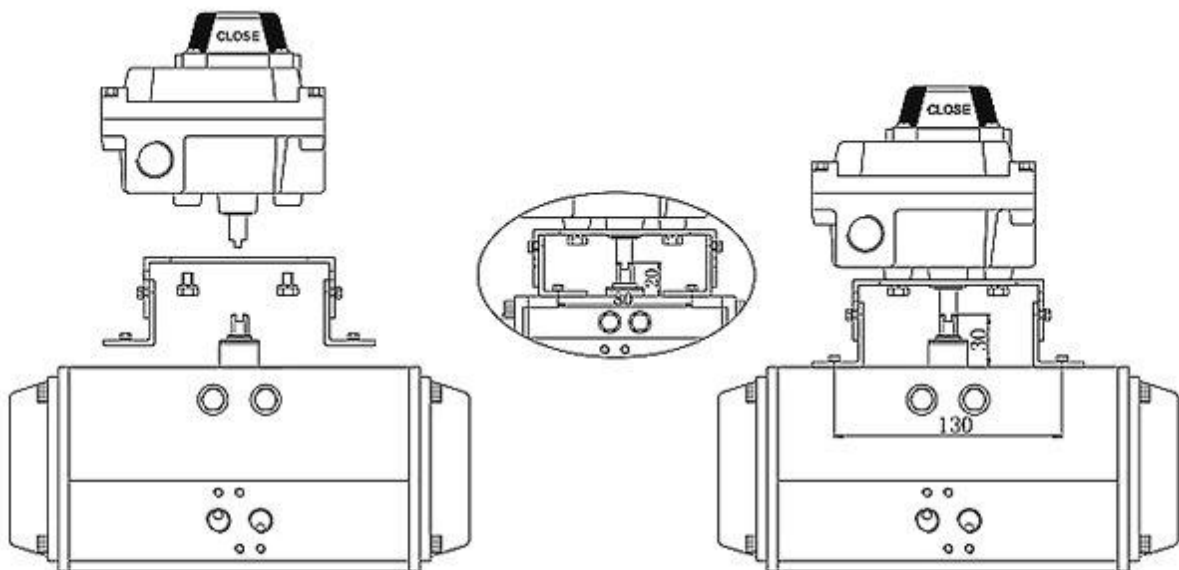
terminals for solenoid valve

No 3: Blue BU (-)

No 6: Blue BU (-)

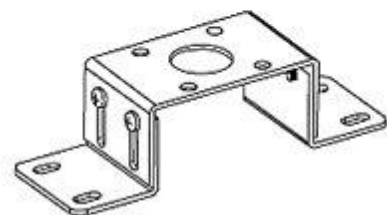


Installation diagram:

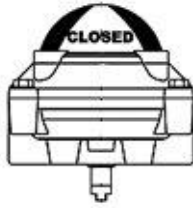


Note:

The installation dimensions comply with 30-80/ 130-H20/30 industry standards.



Packing List:



Product Pictures:

