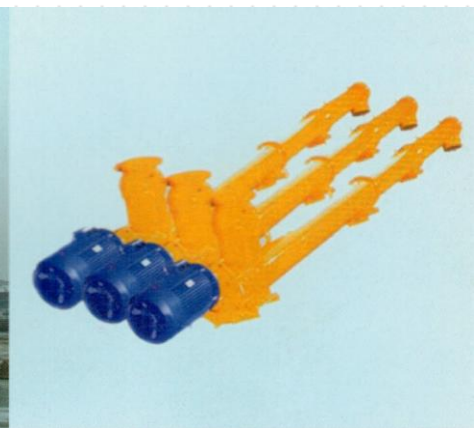
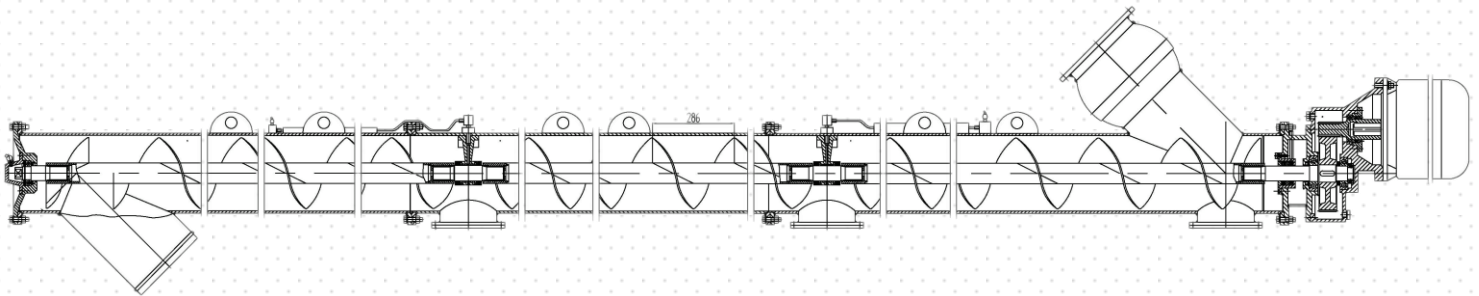
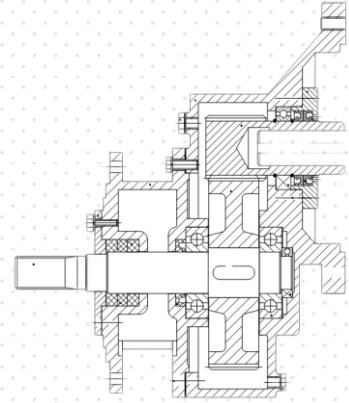
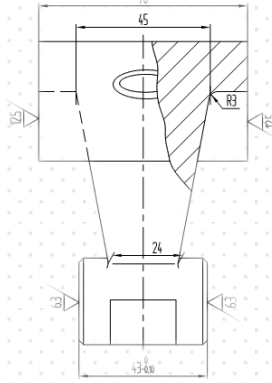
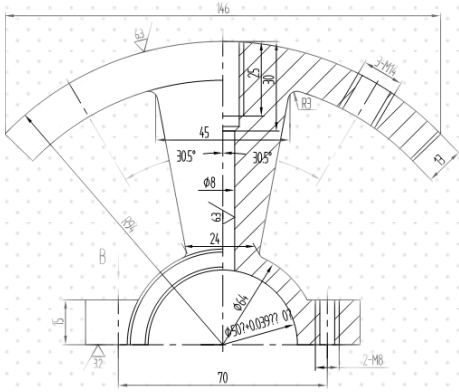




Screw Conveyor Accessories

Copyright (C) 2015 by Henan Hiya Mechanical Equipment Co.,LTD All rights reserved.





SM325螺旋专用减速机



SM273螺旋专用减速机



SM219螺旋专用减速机



轴承支座



中吊轴



中吊轴



VM273A(B)型螺旋专用减速机



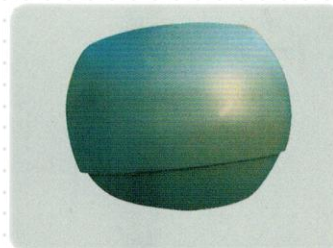
VM219B型螺旋专用减速机



VM219A型螺旋专用减速机



轴承支座



万向节



减速机配件



法兰



减速机配件



螺旋叶片

Screw Conveyor Accessories 2015 Manual

About Screw Conveyor

Screw Conveyor is mainly used for conveying powdery, granular and small piece of material, such as coal, carbon black, soda ash, reclaimed rubber powder, zinc oxide, calcium carbonate and small coal. It is not suitable for conveying perishable, viscous and easy to agglomerate material.

Screw conveyor suitable environment temperature is -20°C - 50°C . material temperature should be less than 200°C , dip angle $\leq 20^{\circ}$, conveying length general is less than 40 meters. The longest do not exceed 70 meters.

Main part: Gearbox; Universal joint; Flanges; Spiral blade; Splined hub; Spline shaft; End cap.ect.

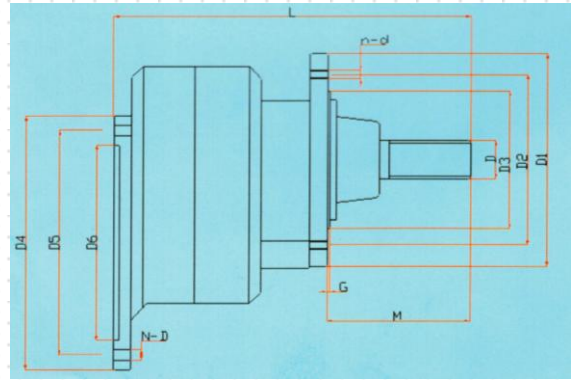
1. Gearbox (hard teeth surface gear reducer) Technical Data



SM Series



VM Series



Type	Motor power	D	D1	D2	D3	D4	D5	D6	N-D	n-d
VM168	5.5 _{KW}	40	250	220	162	300	265	230	4-M12	8-M10
VM219A	5.5/7.5 _{KW}	40	280	250	210	300	265	230	4-M12	8-M10
VM219B	11/15 _{KW}	40	280	250	210	350	300	250	4-M16	8-M10
VM273A	15/18.5 _{KW}	40(45)	350(330)	310(305)	268 (265)	350	300	250	4-M16	6-Φ 18 (8-M10)
VM273B	18.5 _{KW}	45	350	310	268	350	300	250	4-M16	6-Φ 18
SM219A	5.5/7.5 _{KW}	40	280	250	210	300	265	230	4-Φ 13	8-Φ 13
SM219B	11/15 _{KW}	40	280	250	210	350	300	250	4-Φ 18	8-Φ 13
SM273	15/18.5 _{KW}	40	330	305	265	350	300	250	4-Φ 18	8-Φ 13
SM323	18.5/22 _{KW}	60	390	360	315	350	300	250	4-Φ 18	8-Φ 13

2. Screw Conveyor Technical Data

Type	Inside diameter mm	Conveying length m	Screw speed r/min	Shell diameter mm	Working angle	Transport capacity t/h	Motor power kw
LSY168	Φ 160	4.5, 6, 9	300	Φ 194	≤45°	20	5.5
LSY219	Φ 200	4.5, 6, 9,12	300(216)	Φ 219	≤45°	40	7.5、 11
LSY273	Φ 250	6, 9,12	216	Φ 273	≤45°	80	11、 15
LSY325	Φ 300	6, 9,12,15	155	Φ 325	≤45°	110	18.5、 22

3. Other Parts:

